

PHNOM PENH'S HISTORY OF DISPLACEMENT – EVICTED COMMUNITIES FROM 1990 TO 2014

F and F # 23

Dec 2014

FACTS and FIGURES

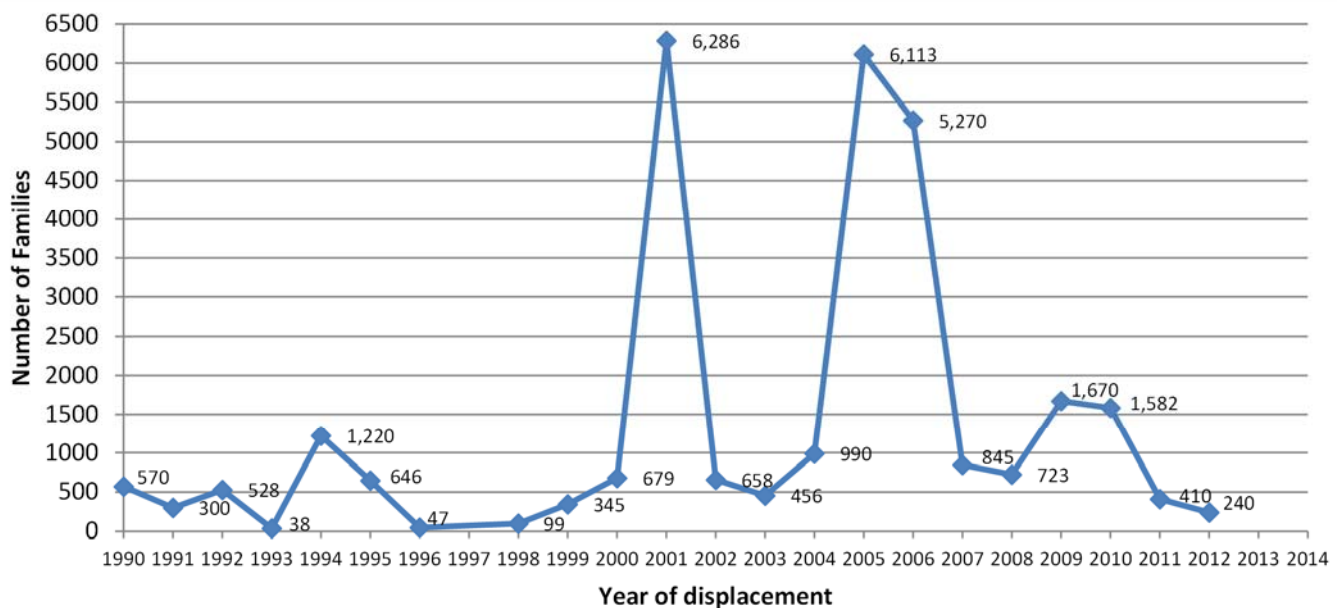
is a publication on urban issues by Sahmakum Teang Tnaut



សមាគមបឹងត្នោត

Sahmakum Teang Tnaut • a Cambodian Urban NGO

SINCE 1990, OVER 29,700 CAMBODIAN FAMILIES HAVE BEEN EVICTED OR DISPLACED FROM THEIR HOMES IN PHNOM PENH.



In photos: Former Dey Krahorn community site development, pictured by STT in 2014, in part undeveloped, and in part used as a sports facility and car park.

Spotlight On: Dey Krahorn. In 2006, 1,465 families were forcibly evicted by 7NG Group. The objective of this development was to build on-site housing for existing residents and a commercial development (town houses and office space). The 1,465 families were moved to a relocation site at Damnak Trayoueng, 20 km from Phnom Penh, removing livelihood opportunities amongst other issues linked to relocation. To make matters worse, in 2009, the remaining 152 families who had managed to resist eviction were brutally removed and also relocated to the Damnak Trayoueng relocation site. Families were inconsistently offered compensation, well-below market levels. Now, instead of housing a vibrant community, the land remains in part undeveloped, and in part used for a restaurant, sports club and car park.

Supported by:

HEINRICH BÖLL STIFTUNG

DISPLACED FAMILIES: 1990-2014 - VERIFIED SETTLEMENTS:

Note: At time of print, and after discussion with partners and reviewing the secondary data, there is no documentation of settlements being evicted during the 2013-2014 period.

Name of settlement, Khan	Year	# of Families	Description	Source
Period: 1990 - 1999				
Wat Sarawan, Doun Penh	1990	570	The MPP and Irish NGO Concern relocated 570 families to a site 15 km from the city near the Kob Srov dike; former site is a side walk/pavement.	URC/STT
Wat Moharmontry, Chamkarmon	1991	300	Households moved to several un-serviced sites, some sites 10km from the city; some households (house owners and renters) remain at this settlement.	URC
Casino near Cambodiana, Doun Penh	1992	528	The MPP claimed for city beautification; Compensation for 200 families, insufficient land for relocation site 12 km from the city named Chuoen Loeu to PP Thmey; Land currently used as Dream Land play park.	URC/STT
Tuol Sav 1, Chamkarmon	1993	38	Details unknown. Compensation of 50,000 Riel offered per family.	URC
Several sites, Phnom Penh	1994	1220	Details Unknown. Eviction for development and beautification project; these projects impacted 16 settlements in the city.	URC/COHRE
Sambok Chap 1/Bassac area, Chamkarmon	1995	166	By the MPP/Sour Srun company; Fire in community and authorities refused all families who were owners to rebuild; the evictees relocated to Trapaing Anchanh; the current land is not yet developed.	COHRE
Several sites, Phnom Penh	1995	480	Details Unknown. Eviction for development and beautification project; these projects impacted 16 settlements in the city.	URC/COHRE
Pochentong, Dangkor	1996	47	Forced eviction by armed military forces; no relocation or compensation.	COHRE
Bassac & Community, Chamkarmon	1998	99	Eviction by Mong Rethy tycoon; voluntary process and offered by Mong Rethy Palm Oil Company; Residents relocated to Monorom, Sihanouk province, 150 km from Phnom Penh (PP).	URC
Several sites, Phnom Penh	1999	217	Details Unknown. Eviction for road improvement, drainage canal rehabilitation; households relocated to Tuol Sambo where 21 km from the city.	URC
Tuol Svay Prey, Chamkarmon	1999	128	Eviction by MPP for road improvement; voluntary process; people relocated to Aphiwat Meanchey, Veng Sreng, 3 km from the original place.	URC/STT
Total to end 1999		3,793		

Period: 2000 - 2005				
Bassac, Chamkarmon	2000	469	Development of public garden and road; relocated to Tuol Rokakos, called "Prey Tituy" 12 km from the city.	STT/URC
Prorlay Boeng Salang, Toul Kork	2000	99	Evicted for rehabilitation of market and drainage systems by MPP; voluntary process; households settled in the canal body and along Boeng Salang canal edge ; dismantled their house themselves; relocated to Kork Khleang 2, 5km from the city; current use of land: residential area, some households remain (house owners and renters).	URC/STT
Toek Laok 14, Toul Kork	2000	111	Road improvement, improvement of hospital by MPP; It was a voluntary process: relocated to Kork Khleang1, 5km from the city; former site now used as National Pediatric Hospital.	URC/STT
Bassac & Chbar Ampov, Chbar Ampov	2001	432	Relocation by MPP; people relocated by 8km to Anlong Korng Thmey.	URC/STT
Bassac & Chbar Ampeou, Chbar Ampov	2001	3,631	Eviction by MPP due to plans for public garden, private development and road extension; fire in the settlement; residents relocated to Anlong Kngan, 15 km from the city.	STT
Tomnup Kob Srov dike, Sensok	2001	329	Upgrading of dike for flood prevention (program funded by the ADB); authorities covered the price of dismantling, households material, and plot of land as compensation. Moreover, authority provided a plot of land of 10x15 meters to affected families in accordance with size of land and assets. They relocated to Trapaing Reang Thmey, 1 km from the original site and 11 km from PP; former site is now an urban poor settlement.	STT
Road 230, Toul Kork	2001	133	Eviction for road improvement; moved to Phum Veal/Samaki 6 at Trapaing Krasaing, 17 km from PP; former site now is a commercial area.	STT
Road 271A/ Northbridge, Meanchey	2001	134	Eviction for road improvement; relocated to Lor Kambor, 9km from PP.	STT
Along Road 271A, Meanchey	2001	88	Eviction by MPP; voluntary process; residents relocated to Kraing Angkrong, 10km to PP.	URC
Road Edges, Phnom Penh	2001	164	Location details unknown; eviction by MPP; relocated to Kork Khleang Thmey, 7km from PP.	STT
Kob Sreouv dike, Sensok	2001	100	Road widening by Sangkat; relocation to Kob Srov Thom or Otdom thmey (20km from PP).	URC
White Building, Chamkarmon	2001	125	Eviction by MPP; relocated to Samaki 5 (17km from PP); current situation of that area is residential area.	STT

Bondos Vichea, Chamkarmon	2001	1150	Eviction by MPP; due to huge fire in the community; authorities did not allowed residents to resettle in that area; evictees relocated to Samaki 1,2 and 3 (15 km from PP); location now is commercial area.	URC
Sansam Kosal, Chamreun Phal & BTP, Meanchey	2002	69	Eviction by MPP; relocated to Tnaot Chrum 4 (4km from PP).	STT
Boeng Salang Pumping Station, Toul Kork	2002	235	Eviction by MPP; relocated to Kork Banhchoun in Porsenchey(10km from PP).	STT
Boeng Tompun Pumping Station, Meanchey	2002	56	Eviction by MPP; relocated to Tnaot Chrum 3 (4km from PP).	STT
Block Tanpa, Doun Penh	2002	298	Eviction by MPP; fire in rooftop community; relocated to Kraing Angkrong 2 (11km from PP).	STT
Stung Meanchey dump site, Meanchey	2003	156	Residents relocated to Prek Tal or Tnaut Chrum 5 (7km from PP).	STT
Railway Communities, Toul Kork	2003	300	Evictees moved to Prey Sala (12km from PP).	STT
Various settlements, Phnom Penh	2004	624	Location details unknown; relocated to Khmer Kampuchea Krom Human Rights & Development Association (KKKHRDA) site (5km from PP).	STT
Pet Lork Sang, Toul Kork	2004	6	Eviction by local authorities; voluntary process and compensations; relocated to Kork Roka	STT
Phnom Penh Thmey, Sensok	2004	237	Eviction by MPP; voluntary process, residents received compensation: plots of land at Wat Chuk Va; 13 households remain in this settlement.	STT
Ponleu Pich, Chamkarmon	2004	123	Eviction by 7NG company and joint owner of Intercontinental Hotel; forced eviction; relocated to Krapoue 2 Community (16 km from PP); site is now a commercial and residential area.	STT
Fine Art University, Doun Penh	2005	83	Details Unknown	USAID
Koh Pich, Chamkarmon	2005	154	Eviction by 7NG company; relocation to Kroboa 1, Tuk Khmao (16km from PP).	USAID & STT
Korean Vocational Training Centre, Porsenchey	2005	70	Eviction by MPP and Ministry of Social Affairs; relocated to Trach Thom 1(16km from PP); former site is now the National Polytechnic Institute of Cambodia.	STT
Along Road 199, Meanchey	2005	52	Eviction by MPP for construction of new road to Sovanna super market and city beautification; some affected families relocated to Tuol Pich or Aphiwat Prey Ingor (16km from PP); this site is now an urban poor settlement and is also under threat of eviction today.	STT
Plouv 291, Toul Kork	2005	55	Relocation to Khmer Leu or Aphiwat Thmey (22km to PP); this location is now a commercial and residential area.	STT

Plouv 317, Toul Kork	2005	57	Year unclear, but certain eviction; number of families is unclear (same as Plouv 566 and 335 below); relocated to Khmer Leu or Aphiwat Thmey (22km to PP); this area became the Acleda training center.	STT
Plouv 335, Toul Kork	2005	57	Year unclear, but certain eviction; number of families is unclear (same as Plouv 566 and 335 below); relocated to Khmer Leu or Aphiwat Thmey (22km to PP); land now used as residential area.	STT
Plouv 566, Toul Kork	2005	57	Year unclear, but certain eviction; number of families is unclear (same as Plouv 566 and 335 below); relocated to Khmer Leu or Aphiwat Thmey (22km to PP); the land now used as Borei Sunway Toul Kork or Sunway Toul Kork City.	STT
Bassac/Min.Foreign Affair, Chamkarmon	2005	32	Eviction for construction of new Ministry of Foreign Affairs; people relocated to Aphiwat Thmey 32 (16km from PP).	STT
Boeng Trabek, Chamkarmon	2005	550	Details Unknown	STT
Boeng Kbal Damrei(CPC village), Russey Keo	2005	2349	Details Unknown	USAID
Borei Keila, 7 Makara	2005	1,060	By MPP & Phan Imex co., ltd.; temporary accommodation and disputed allocation of apartments among the 1,776 original families; some families occupied the building while others continued requesting 2 more buildings be constructed in accordance with the agreement with authorities and corporation; some still living at site in cottages and tents.	USAID
Sangkum Thmey & Wat Botum, Doun Penh.	2005	68	Details Unknown	USAID
Doun Penh Hospital, Doun Penh	2005	924	Details Unknown	STT
Phum Rong Chak, PP Thmey, Sensok	2005	545	Eviction by authorities/Military Police; 200 homes demolished; this location became an education center for children called SOS Phum Kuma Phnom Penh.	USAID/LICADHO
Total 2000-2005		24,251		

Period: 2006 - 2010

Behind Health Centre, Toul Kork	2006	135	Eviction by MPP; relocated to Aphiwat Thmey 2 (22 km to PP); near to National Institute for Public Health.	STT
Boeng Kak area, Toul Kork	2006	170	Eviction by MPP, relocated to Aphiwat Thmey 3 or Kork Roka (22km to PP); some are filled by sand.	STT
Dey Krahorm, Chamkarmon	2006	1465	Eviction by 7NG company, on-site housing for residents and commercial development; forcible eviction and relocation to Damnak Trayueng (20 km to PP); former site now used for multiple	STT

			purposes: restaurant, sports club and car park.	
Private land, Dangkor	2006	56	Location details unknown, eviction by Theng Seng company; evictees did not received adequate compensation; forcible eviction to Trach Thom 2 (25km to PP).	STT
Street 1986, Sensok	2006	72	Eviction by MPP; relocated to Mlop Por; former site now a residential and commercial area.	STT
Street 202, Toul Kork	2006	72	Eviction by tycoon Kong Triv; relocated to Chambok Thom (20km to PP), former site now commercial area Mondial Center.	STT
Street 337, Toul Kork	2006	135	Eviction by MPP; relocation to Prey Moul or Aphiwat Thmey 4 (17km to PP); former site now the RAMAR futsal and car wash.	STT
Stung Meanchey, Meanchey	2006	76	Eviction by MPP; relocation to Tuol Sambo Thmey (17km to PP).	STT
Sambok Chap, Bassac Chamkarmon	2006	1,554	Eviction by MPP/Sour Srun company; in June 06: forcible evictions of renters, eight people were detained and 3 subsequently imprisoned; relocated to Phum Andong (20km to PP).	STT/ LICADHO
Sambok Chap, Bassac Chamkarmon	2006	1,367	Eviction by MPP/Sour Srun; forcible eviction process in May-June; evictees relocated to Trapaing Anchanh (20km to PP).	STT
Monivong AB (Hospital), Doun Penh	2006	168	Eviction by Royal Group/Min Interior; forcibly evicted; three women hospitalized, one pregnant women beaten with electric baton during the eviction; relocation to Damnak Trayoeung/ Ang Snoul site (30 km to PP). Former site now used as a commercial area.	STT/LICADHO
Borei Keila, 7 Makara	2007	335	Eviction by MPP & Phan Imex co., ltd; families re-housed within new housing block.	STT
Chraoy Changvar	2007	132	Eviction due to Sokha Hotel project development, and city beautification.	STT
Reak Reay, Bassac Chamkarmon	2007	100	Families moved to various locations after intimidation claims; land now used as Bassac garden city.	HRTF
Prey Sala 2, Dangkor	2007	278	Families displaced after dispute with high ranking officials; further details unknown.	STT
Boeng Kak Phum 1,BKL, Doun Penh	2008	250	BKL development; commercial, cultural, tourist, housing and recreation center; partly filled by sand; relocated to Borei Santepheab II, Kraing Angkrong and others sites.	STT/BAB-C
Boeng Kak Phum 4,BKL, Doun Penh	2008	250	BKL development; a commercial, cultural, tourist, housing and recreation center; completely filled with sand; relocated to Chaom Chao (24 km from PP)	STT/BAB-C

Russey Keo	2008	200	Fire spread and destroyed homes during a dispute at massage business; further details unknown.	Xinhau News
Banlah S'et, Sensok	2008	23	Forced eviction, using arms and tear gas; former land now is free occupied land.	STT
Reak Reay, Chamkarmon	2009	190	Eviction by MPP/ Canadia for development; final group of families forcibly evicted and relocated to Choam Chao. Fomer land now used as Bassac garden city.	HRTF/STT
Borei Keila, 7 Makara	2009	31	Eviction by MPP and Phan Imex company; HIV families removed; eviction to Tuol Sambo (22km to PP).	HRTF/LICADHO
Boeng Kak, Village 1, 2 & 4, Doun Penh	2009	800	Eviction by MPP; on-going displacement: Shukaku/MPP/Erdos offered 8,000 USD per family or plot of land in Damnak Trayoeung	STT
Group 78, Tonle Bassac, Chamkarmon	2009	146	Eviction by MPP /Suos Srun Company; forcibly removed families; evictees moved to Roka Koh, Trapaing Krasaing and others sites; former site now under construction.	HRTF/LICADHO
Hanoi Road, Sensok	2009	12	Eviction for road widening; local authorities displaced the families (50 residents affected).	HRTF
Rotes Pleung A, Toul Kork	2009	12	Eviction by Othsman Hassan Cambodia Dev't co., ltd; number of families may be incorrect (may refer only to forcibly evicted households, not to total number of displaced); relocated to Prey Sala community; former site now a commercial area.	LICADHO
Rotes Pleung B, Toul Kork	2009	12	Eviction by Othsman Hassan Cambodia Dev't co., ltd; number of families may be incorrect (may refer only to forcibly evicted households, not to total number of displaced); relocated to Prey Sala community; former site still undeveloped.	LICADHO
Tomnop Teok, Chamkarmon	2009	288	Fire in the community; families not allowed to return. On April 16th: Khan chief offered 4 x 6m plots of land in compensation in Kandal province.	HRTF
Chraoy Changvar	2009	27	Eviction due to MPP road extension; further details unknown.	HRTF
Dey Krahom, Chamkarmon	2009	152	Eviction by 7NG; on-site housing for residents and commercial development; remaining families brutally evicted and relocated to Damnak Trayoeung; former land is occupied by private company.	LICADHO
Boeng Kak Lake, Villages 4,6,22 and others, Doun Penh	2010	1,050	BKL development; a commercial, cultural, tourist, housing and recreation center. Ongoing gradual displacement of families around lake by MPP/ Shukaku/ Erdos.	STT
Boeng Kak Village 2, BKL, Doun Penh	2010	18	Eviction by the MPP for road development; offered 236 USD or 5x12m plot in Dangkor.	PPPost
Beoung Trabek Lake, Chamkarmon	2010	150	Eviction by MPP for canal widening.	PPPost

Kilometre 6, Russey Keo	2010	35	Forced eviction of families for the Lao Tong Ngi development.	LICADHO
Phum 104, Railway Boeng Kak, Toul Kork	2010	257	Fire destroyed the community; dispute still unresolved in March 2011; the site is an urban poor settlement along the railway edge.	PPPost
Spean Kpous, Russey Keo	2010	72	Eviction by government's Inter-Ministerial Resettlement Committee (IRC); railway rehabilitation project; 72 families relocated to Trapaing Anchanh (25km to PP) while others had their plots/house cut due to railway rehabilitation project. All affected families (including those not relocated) are planned to receive additional compensation due to the IRC recognizing that initial compensation was insufficient.	STT
Subtotal 2006-2010		18,598		

Period: 2011 - 2014				
Samaki 3.2, Toul Kork	2011	50	Road development to Boeng Kak Lake; former site is urban poor community.	STT
Samaki Plouv Dek, Toul Kork	2011	7	Details unknown.	STT
Lek 3, Russey Keo	2011	10	Eviction by government (IRC) for railway rehabilitation project; affected families provided land (6x8m) at Trapaing Anchanh (25km from PP) and compensation.	STT
Mittapheap, Russey Keo	2011	21	Eviction by government (IRC) for railway rehabilitation project; affected families received plot of land at Trapaing Anchanh (25km from PP) and compensation.	STT
Phum 12, Tuol Kork	2011	2	Eviction by government (IRC); houses affected by railway development for rehabilitation project.	STT
Phum 23, Tuol Kork	2011	2	Eviction by Government (IRC); houses affected by railway development for rehabilitation project; affected family received compensation; moved to Trapaing Anchanh Thmey (25km from PP).	STT
Rotes Pleung, Russey Keo	2011	2	Eviction by Government (IRC); railway rehabilitation project; voluntary relocation; one family moved to Trapaing Anchanh, the other received 500 USD; former site is an urban poor settlement along the railway edge.	STT
Klaing Saing, Chraoy Changvar	2011	20	Eviction by SOKIMEX for 'public garden development'; forcible eviction with use of armed force; former site completely filled with sand.	STT
Samroang, Porsenchey	2011	24	Eviction by the ADB & USAID; compensated with actual cost of housing in affected settlement; still live in Samroang, 1 km from the original settlement.	STT
Chroy Changva Bridge	2011	78	Eviction by MPP due to new Chraoy	STT

East, Russey Keo			Changvar bridge construction.	
Tulo Kork Village, Russey Keo	2011	44	Forcible eviction following dispute with National Authority for Land Dispute Resolution (NALDR) deputy head Khun Haing; plus 200 armed security forces; no compensation.	Cambodia Daily
Boeng Kak Villages 20, 21, 23,24 and others, BKL, Toul Kork	2011	150	BKL development; a commercial, cultural, tourist, housing and recreation center; ongoing gradual displacement of families around lake by MPP/ Shukaku/ Erdos.	STT
Borei Keila, 7 Makara	2012	240	Eviction by MPP and Phan Imex company on 3rd Jan 2012; demolition and forcible eviction; 85 families relocated to Tuol Sambo with the plot of housing 4x5m and 135 families relocated to Phnom Bat with the plot of land 5x6m. Any other compensation not clear. More than 100 families are waiting for solutions from the MPP and company.	STT
Subtotal 2011-2014		1,060		

GRAND TOTAL DISPLACED FAMILIES 1991 - 2014	29,715
---	---------------

DISPLACED FAMILIES: 1990-2014 - UNVERIFIED SETTLEMENTS:

Name of settlement, Khan	Year	# of Families	Description	Source of info.
Plouv 102, Doun Penh	1999	35	Details unknown	STT
Snaka Police, Doun Penh	1999	1000	Details unknown	STT
Wat Broyouvong, Chamkarmon	1999	52	Details unknown	STT
Tuol Sleng, Chamkarmon	1999	30	Details unknown	STT
Chao Ponheahok, Chamkarmon	2000	30	By MPP; Details unknown	STT
Kbal Tomnup, Chamkarmon	2000	488	Details unknown	STT
Phsar Toul Kork, Toul Kork	2001	100?	Details unknown	STT
Juliana, 7 Makara	2001	100?	Detail unknown	STT
Sangkat Boeng Kak II, Toul Kork	2005	88	May be same as Plouv 291; eviction may have been early 2005.	STT
Borei Kamakor, Chamkarmon	2005	400	Details unknown	STT
Dei Theng Seng, Porsenchey	2005	?	Eviction by tycoon/company (name unknown); displaced households were forcibly evicted and received inadequate compensation from the company.	STT
Phum 1, Doun Penh	2007	80	Located slightly east of initial location (just south of major development), may have been evicted early 2005.	STT
Tuol Sangke A, Russey Keo	2007	80	By IRC; railway rehabilitation project; Trapaing Anchanh Thmey (25km to PP).	STT
Phum 101, Toul Kork	2008	?	By IRC; railway rehabilitation project; Trapaing Anchanh Thmey (25km to PP).	STT
Boeng Kak Phum 20, Doun Penh	2008	?	Details unknown	STT
Boeng Kak Phum 21, Doun Penh	2008	?	Details unknown	STT
Boeng Kak Phum 22, Doun Penh	2008	?	Details unknown	STT
Boeng Kak Phum 23, Doun Penh	2008	?	Details unknown	STT
Boeng Kak village 6, Doun Penh	2008	?	Details unknown	STT
Steung Meanchey, Meanchey	2008	50	Details unknown	STT
Khang Thbong Spean Monivong, Chbar Ampov	2008	10	Details unknown	STT

Chey Chom Neas, Chamkarmon	2009	47	Details unknown	STT
National Road No. 6A, Chraoy Changvar	2009	80	New Chraoy Changva bridge construction and road widening; some renters received compensation while house owners decided not to move or asked for more compensation; finally, most owners received nothing.	STT
Plouv 339, Toul Kork	?	?	Details unknown	STT
Along Tonle Sap East, Russey Keo	?	54	Details unknown	STT
Suon Thmei, Porsenchey	?	?	Details unknown	STT
T85 or Phum 3, Chamkarmon	?	?	By Thai Bunrong Company, Lyong Phat tycoon; luxury building construction plan; there remains 12-13 households that are still demanding adequate compensation.	STT
Stueng Meanchey Plouv 271, Toul Kork	?	?	Details unknown	STT

Source acknowledgements; References:

BAB-C (Bridges Across Borders/South East Asia) website; <http://babcambodia.org/newsarchives> - changed to: Equitable Cambodia (EC); <http://www.equitablecambodia.org>.

Cambodia Daily; www.cambodiadaily.com

COHRE (Centre on Housing Rights and Eviction); <http://www.cohre.org/regions/cambodia>

HRTF (Housing Rights Task Force); email updates; <http://www.hrtfcambodia.org>

LICADHO; various website releases and emails; <http://www.licadho-cambodia.org>

OHCHR (Office of High Commissioner Human Rights) List of Affected Poor Settlements in 7 Khans throughout Phnom Penh 2004-8, Sep 2008

Phnom Penh Post; <http://www.phnompenhpost.com>

SITHI Cambodian Human Rights Portal; <http://www.sithi.org>

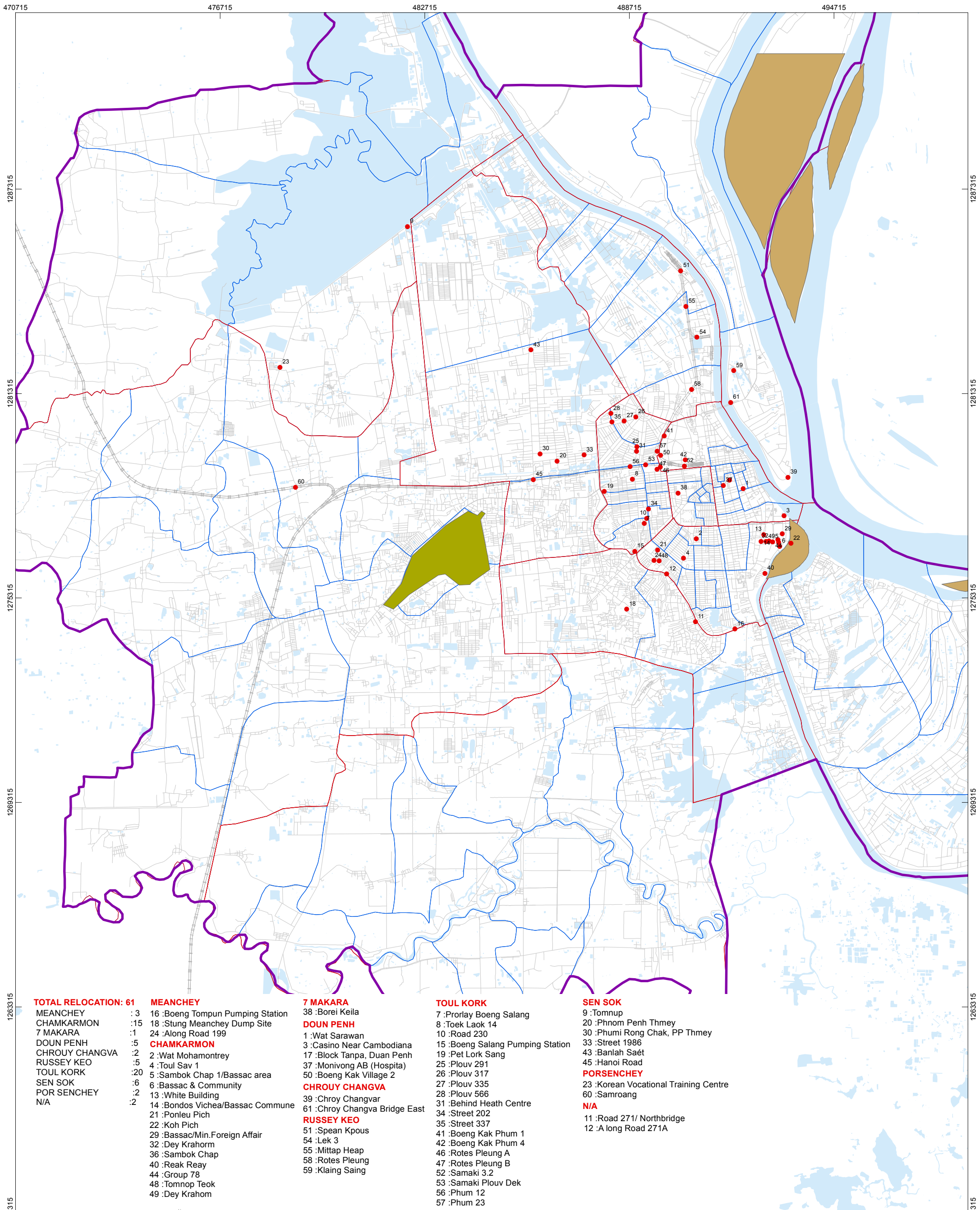
STT (Sahmakum Teang Tnaut); <http://www.teangtnaut.org>:

- Fact & Figures (1999). Displaced families: PP
- The 8 Khan Survey (2009)
- Fact & Figures 19 (2011). Displaced families: Phnom Penh 1990-2011.
- Fact & Figures 21 (2012). Resettling Phnom Penh: 54-and counting?
- The Phnom Penh Survey (2014)

URC (Urban Resource Centre)/Fallavier; Study Of Relocation of Urban Poor Communities in Phnom Penh, March 2002

USAID Cambodian Villages Directly Affected By Land Conflict and Located In Conflict Affected Areas, September 2005

Xinhua News; <http://www.xinhuanet.com/>



TOTAL RELOCATION: 61

- MEANCHEY :3
- CHAMKARMON :15
- 7 MAKARA :1
- DOUN PENH :5
- CHROUY CHANGVA :2
- RUSSEY KEO :5
- TOUL KORK :20
- SEN SOK :6
- POR SENCHEY :2
- N/A :2

MEANCHEY

- 3 :Boeng Tompun Pumping Station
 - 18 :Stung Meanchey Dump Site
 - 24 :Along Road 199
- CHAMKARMON**
- 2 :Wat Mohamontrey
 - 4 :Toul Sav 1
 - 5 :Sambok Chap 1/Bassac area
 - 6 :Bassac & Community
 - 13 :White Building
 - 14 :Bondos Vichea/Bassac Commune
 - 21 :Ponleu Pich
 - 22 :Koh Pich
 - 29 :Bassac/Min.Foreign Affair
 - 32 :Dey Krahorm
 - 36 :Sambok Chap
 - 40 :Reak Reay
 - 44 :Group 78
 - 48 :Tomnop Teok
 - 49 :Dey Krahom

7 MAKARA

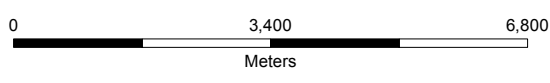
- 38 :Borei Keila
- DOUN PENH**
- 1 :Wat Sarawan
 - 3 :Casino Near Cambodiana
 - 17 :Block Tanpa, Duan Penh
 - 37 :Monivong AB (Hospita)
 - 50 :Boeng Kak Village 2
- CHROUY CHANGVA**
- 39 :Chroy Changvar
 - 61 :Chroy Changva Bridge East
- RUSSEY KEO**
- 51 :Spean Kpous
 - 54 :Lek 3
 - 55 :Mittap Heap
 - 58 :Rotes Pleung
 - 59 :Klaing Saing

TOUL KORK

- 7 :Prorlay Boeng Salang
- 8 :Toek Laok 14
- 10 :Road 230
- 15 :Boeng Salang Pumping Station
- 19 :Pet Lork Sang
- 25 :Plouv 291
- 26 :Plouv 317
- 27 :Plouv 335
- 28 :Plouv 566
- 31 :Behind Heath Centre
- 34 :Street 202
- 35 :Street 337
- 41 :Boeng Kak Phum 1
- 42 :Boeng Kak Phum 4
- 46 :Rotes Pleung A
- 47 :Rotes Pleung B
- 52 :Samaki 3.2
- 53 :Samaki Plouv Dek
- 56 :Phum 12
- 57 :Phum 23

SEN SOK

- 9 :Tomnup
 - 20 :Phnom Penh Thmey
 - 30 :Phumi Rong Chak, PP Thmey
 - 33 :Street 1986
 - 43 :Banlah Saét
 - 45 :Hanoi Road
- PORSENCHEY**
- 23 :Korean Vocational Training Centre
 - 60 :Samroang
- N/A**
- 11 :Road 271/ Northbridge
 - 12 :A long Road 271A



Coordinate System:
WGS 1984 UTM Zone 48N

Projection:
Transverse Mercator

Datum: WGS 1984

Scale: 1:100,000

Authors: Mrs. Tim Sreyleak

Survey team:
Mr. Bour Chhayya, Mr. Tai Makara

Date: 12/19/2014

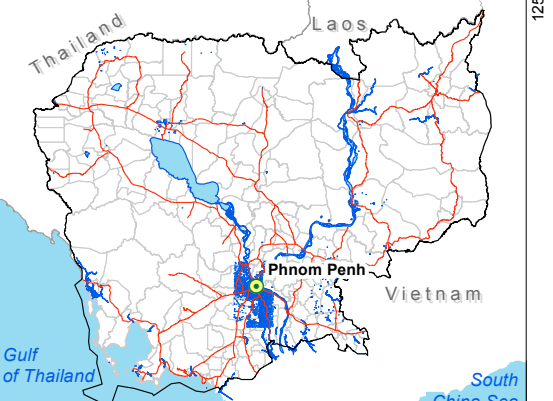
Sources:
STT: Urban poor settlements (2014), NEC: Phnom Penh boundary (2012), Khan boundary (2012), Sangkat boundary (2012), Openstreetmap.org: Road (2014), Unknown: Railway, River/Lake.

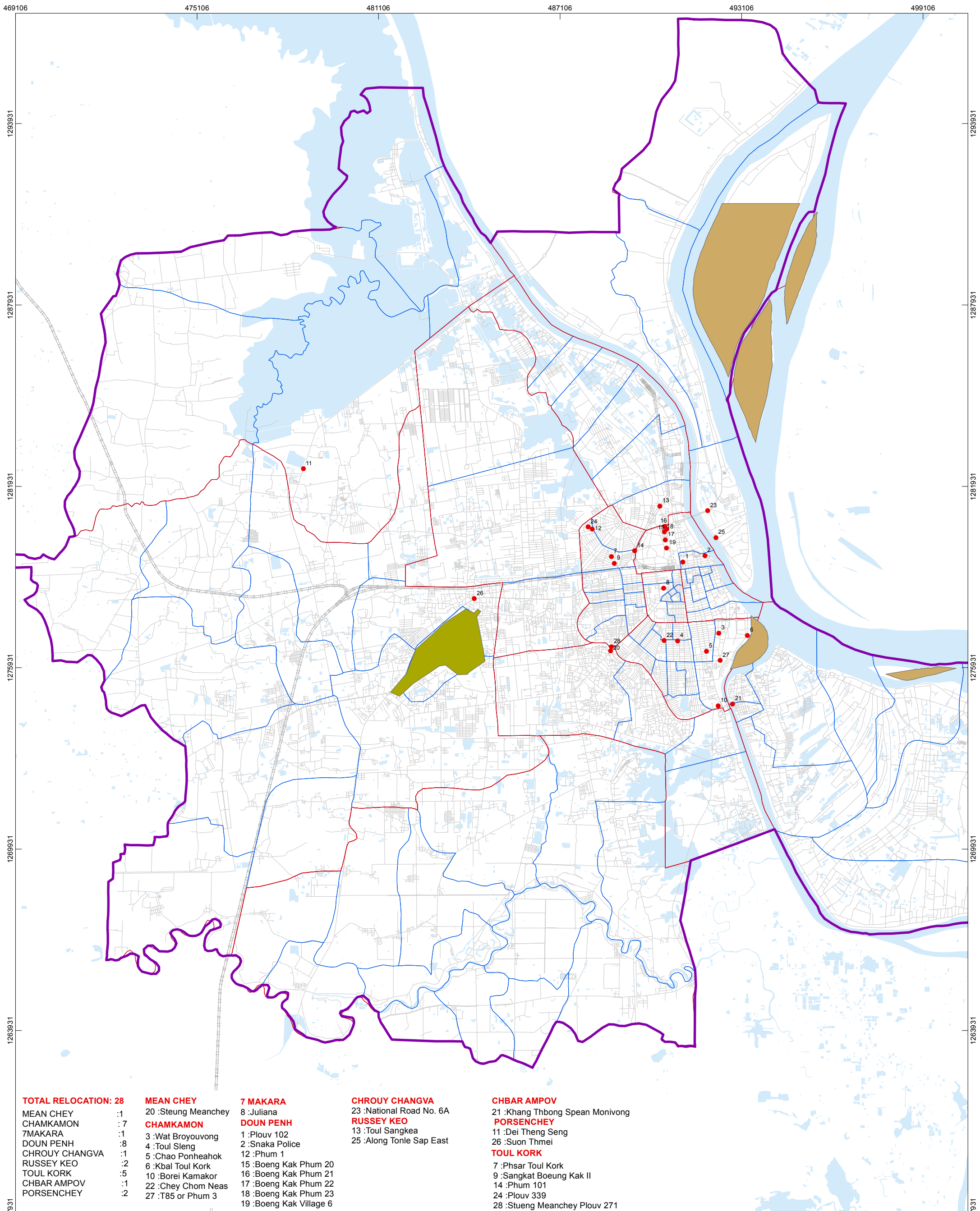
Evicted Settlements, Verified Locations, Phnom Penh

កំណត់សំគាល់

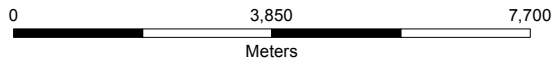
Legend

- ទីតាំងផ្ទះបំបែកត្រូវបានបញ្ជាក់ (ផ្ទៀងផ្ទាត់)
Evicted Settlement (Verified)
- ្រង ផ្លូវ
Road_2014
- ្រង ផ្លូវថ្នល់
Railway
- ្រង ព្រំប្រទល់រាជធានីភ្នំពេញ
Phnom Penh Boundary
- ្រង ព្រំប្រទល់ខណ្ឌ
Khan Boundaries
- ្រង ព្រំប្រទល់សង្កាត់
Sangkat Boundaries
- ្រង ព្រលានយន្តហោះ
Airport
- ្រង កោះ
Island
- ្រង បឹង ទន្លេ
Waterway





TOTAL RELOCATION: 28	MEAN CHEY	7 MAKARA	CHROUY CHANGVA	CHBAR AMPOV
MEAN CHEY :1	20 :Steung Meanchey	8 :Juliana	23 :National Road No. 6A	21 :Khang Thbong Spean Monivong
CHAMKAMON :7	CHAMKAMON	DOUN PENH	RUSSEY KEO	PORSENCHEY
7MAKARA :1	3 :Wat Broyouvang	1 :Plouv 102	13 :Toul Sangkea	11 :Dei Theng Seng
DOUN PENH :8	4 :Toul Sleng	2 :Snaka Police	25 :Along Tonle Sap East	26 :Suon Thmei
CHROUY CHANGVA :1	5 :Chao Ponheahok	12 :Phum 1		TOUL KORK
RUSSEY KEO :2	6 :Kbal Toul Kork	15 :Boeng Kak Phum 20		7 :Phsar Toul Kork
TOUL KORK :5	10 :Borei Kamakor	16 :Boeng Kak Phum 21		9 :Sangkat Boeung Kak II
CHBAR AMPOV :1	22 :Chey Chom Neas	17 :Boeng Kak Phum 22		14 :Phum 101
PORSENCHEY :2	27 :T85 or Phum 3	18 :Boeng Kak Phum 23		24 :Plouv 339
		19 :Boeng Kak Village 6		28 :Stueng Meanchey Plouv 271



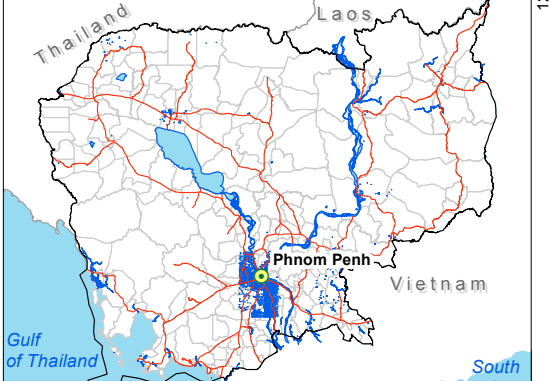
Coordinate System: WGS 1984 UTM Zone 48N	Scale: 1:112,712
Projection: Transverse Mercator	Authors: Mrs. Tim Sreyleak
Datum: WGS 1984	Survey team: Mr. Bour Chhayya, Mr. Tai Makara
	Date: 12/19/2014

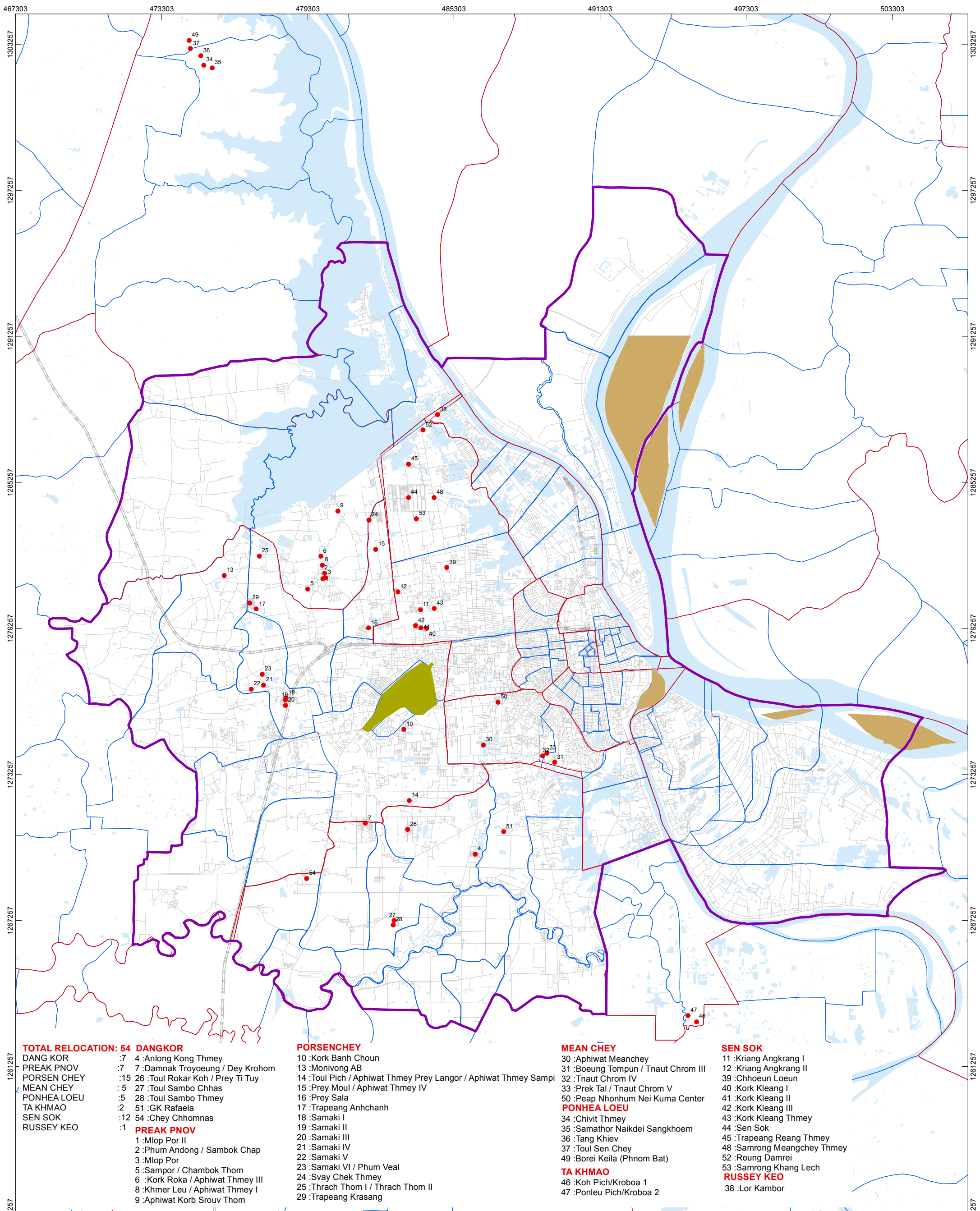
Sources:
STT: Urban poor settlements (2014), NEC: Phnom Penh boundary (2012), Khan boundary (2012), Sangkat boundary (2012), Openstreetmap.org: Road (2014), Unknown: Railway, River/Lake.

Evicted Settlement, Unverified Locations, Phnom Penh

កំណត់សំគាល់ Legend

- ទីតាំងផ្ទះបាត់បង់ (មិនផ្ទៀងផ្ទាត់)
Evicted Settlement (Unverified)
- ព្រំប្រទល់រាជធានីភ្នំពេញ
Phnom Penh Boundary
- ព្រំប្រទល់ខណ្ឌ
Khan Boundaries
- ព្រំប្រទល់សង្កាត់
Sangkat Boundaries
- ព្រលានយន្តហោះ
Airport
- កោះ
Island
- បឹង ទន្លេ
Waterway
- ផ្លូវថ្នល់
Road_2014t
- ផ្លូវដែក
Railway





TOTAL RELOCATION: 54

DANG KOR	:7	4 :Anlong Kong Thmey
PREAK PNOV	:7	7 :Damnak Troyoeung / Dey Krohom
PORSEN CHEY	:15	26 :Toul Rokar Koh / Prey Ti Tuy
MEAN CHEY	:5	27 :Toul Sambo Chhas
PONHEA LOEU	:5	28 :Toul Sambo Thmey
TA KHMAO	:2	51 :GK Rafaela
SEN SOK	:12	54 :Chey Chhomnas
RUSSEY KEO	:1	

PORSENCHHEY

10 :Kork Banh Choun
13 :Monivong AB
14 :Toul Pich / Aphiwat Thmey Prey Langor / Aphiwat Thmey Sampi
15 :Prey Moul / Aphiwat Thmey IV
16 :Prey Sala
17 :Trapeang Anhchanh
18 :Samaki I
19 :Samaki II
20 :Samaki III
21 :Samaki IV
22 :Samaki V
23 :Samaki VI / Phum Veal
24 :Svay Chek Thmey
25 :Thrach Thom I / Thrach Thom II
29 :Trapeang Krasang

MEAN CHEY

30 :Aphiwat Meanchey
31 :Boeung Tompun / Tnaut Chrom III
32 :Tnaut Chrom IV
33 :Prek Tal / Tnaut Chrom V
50 :Peap Nhonhum Nei Kuma Center

PONHEA LOEU

34 :Chivit Thmey
35 :Samathor Naikdei Sangkhoem
36 :Tang Khiev
37 :Toul Sen Chey
49 :Borei Keila (Phnom Bat)

TA KHMAO

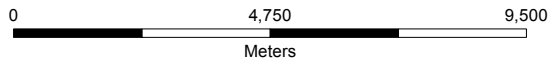
46 :Koh Pich/Kroboa 1
47 :Ponleu Pich/Kroboa 2

SEN SOK

11 :Kriang Angkrang I
12 :Kriang Angkrang II
39 :Chhoeun Loeun
40 :Kork Kleang I
41 :Kork Kleang II
42 :Kork Kleang III
43 :Kork Kleang Thmey
44 :Sen Sok
45 :Trapeang Reang Thmey
48 :Samrong Meangchey Thmey
52 :Roung Damrei
53 :Samrong Khang Lech

RUSSEY KEO

38 :Lor Kambor



Coordinate System: WGS 1984 UTM Zone 48N	Scale: 1:140,000
Projection: Transverse Mercator	Authors: Mrs. Tim Sreyleak
Datum: WGS 1984	Survey team: Mr. Bour Chhayya, Mr. Tai Makara
	Date: 12/19/2014

Sources:
STT: Urban poor settlements (2014), NEC: Phnom Penh boundary (2012), Khan boundary (2012), Sangkat boundary (2012), Openstreetmap.org: Road (2014), Unknown: Railway, River/Lake.

Relocation Sites, Phnom Penh

កំណត់សំគាល់
Legend

- តំបន់តាំងទីលំនៅថ្មី
Relocation Site
- ព្រំប្រទល់រាជធានីភ្នំពេញ
Phnom Penh Boundary
- ព្រំប្រទល់ខណ្ឌ
Khan Boundaries
- ព្រំប្រទល់សង្កាត់
Sangkat Boundaries
- ព្រលានយន្តហោះ
Airport
- កោះ
Island
- បឹង ទន្លេ
Waterway
- ផ្លូវ
Road_2014
- ផ្លូវរថភ្លើង
Railway

